

One life
One health
No experiments.



SUPPORTER - height adjustable working table

Health - our most important asset

Widespread disease number 1

Musculoskeletal diseases are top of the list of widespread diseases. This is documented by studies of stationary accident insurances.

Back pain is also a reason why employees do not attend work for an average of more than 10 days.

The wrong posture and lifting of heavy loads are nearly always the reasons for these symptoms, which can be found among all professions. This not only affects older people. Younger ones are also increasingly suffering from the same symptoms.



The solution is clear!

Work tables that unconditionally adjust to the specific situation are the solution.

The required height adjustment takes place quickly and intuitively. This considers the body size of the worker, the dimension of the work-piece and the respective activity.

Work tables of the SUPPORTER series have been developed based on scientific findings.

Wolfgang Schneider, an ergonomics expert with many years of experience and highly renowned in the specialist world, acts as a consultant.

Wolfgang Schneider regularly shares interesting information and news on his blog

ergoflexX de



It's the details that make the difference

The SUPPORTER has been specifically designed for manual workplaces in production, assembly operations and maintenance.

The different models cover a broad application range.

Comprehensive accessories also permit even better coordination, for different uses.



1 The side parts ensure the necessary stability while at the same time protecting the lifting and lowering mechanism inside.

2 High-quality drives on both sides move the work table to the desired level. The operation takes place, depending on the equipment, manually with a foot lever or is electrically powered. The table top moves perfectly in parallel, gently and securely - even at asymmetrical stress.




3 The special side part build keeps the space below the work top open. This space can be used when using special deposits or cabinets for parts and tools.

4 Stable casters for mobility. Since the SUPPORTER works independently of supply lines, it can be moved quickly to the desired workplace and fastened there with reliable brakes.

5 The SUPPORTER AM 500 is powder-coated in RAL 7035 light grey and RAL 5000 violet blue.

The SUPPORTER

Overview

	Model	Load capacity kg	Base frame mm	Worktop mm
	AM 500 FH basic	500	1,460 x 740	
	AM 1200 FH basic	1,200	1,460 x 740	
	AM 400 ESA	400	1,460 x 740	
	AM 500 ESA	500	1,460 x 740	
	AM 500 FH classic 1 with beech-multiplex worktop	500		1,600 x 790
	AM 500 FH classic 2 with beech-multiplex breadboard	500		1,600 x 790
	AM 500 FH perfect 1	500		1,600 x 790
	ErgoPlan EP 1	500		1,700 x 640
	ErgoPlan EP 2	500		1,700 x 640
	Ergoplan EP 3	500	Connector for existing carpenter work bench	

Min. height/ overall height mm	Max. height mm	Effect. stroke mm	Drive	Substructure	Page	Accessories Page
670	970	300	foot operated	mobile	6	14 - 23
670	970	300	foot operated	mobile	6	14 - 23
670	970	300	electrical	mobile	7	14 - 23
670	970	300	electrical	mobile	7	14 - 23
700	1,000	300	foot operated	mobile	8	14 - 23
700	1,000	300	foot operated	mobile	9	14 - 23
700	1,000	300	foot operated	mobile	10	14 - 23
780	1,080	300	foot operated	mobile / stationary	12	
780	1,080	300	foot operated	stationary	12	
780	1,080	300	foot operated	stationary	12	

Basic models without work top

manually hydraulic

SUPPORTER AM 500 / 1200 FH

with hydraulic foot actuation

- Base frame 1,460 x 740 mm
- Load capacity 500 / 1,200 kg
- Min. height/overall height 670 mm
- Max. height 970 mm
- Effective stroke 300 mm
- Weight 120 kg
- Powder coated RAL 7035 light grey
5000 violet blue

AM 500 FH Art.-no. 210.100

AM 1200 FH Art.-no. 210.200



The basic model, on which various work tops can be placed.

The solid platform basic frame is prepared for installation of these plates, and applied with the required bores for this.



A stable foot pedal, installed on the left or right of the substructure, operates a hydraulic unit inside the steel structure.

Lifting and lowering - the SUPPORTER reacts to the operator's wishes quickly and at a well-dimensioned speed.

Accessories on pages 14 - 23



SUPPORTER AM 400 / 500 ESA

with electrical comfort adjustment

- Base frame 1,460 x 740 mm
- Load capacity 400 / 500 kg
- Min. height/overall height 670 mm
- Max. height 970 mm
- Effective stroke 300 mm
- Weight 120 / 130 kg
- Powder coated RAL 7035 light grey
5000 violet blue

AM 400 ESA Art.-no. 212.200
AM 500 ESA Art.-no. 212.110



The basic design of the SUPPORTER with electro-motor-powered height adjustment for comfortable work.



The height is set at the centrally placed operating element. The push of a button is enough to move the work platform up and down.

Up to four settings can be programmed and called on demand.

Accessories on pages 14 - 23

Standard model with work top

beech-multiplex

SUPPORTER AM 500 FH classic 1

with hydraulic foot operation

- Base frame 1,600 x 790 mm
- Load capacity 500 kg
- Min. height/overall height 700 mm
- Max. height 1,000 mm
- Effective stroke 300 mm
- Weight 140 kg
- Powder coated RAL 7035 light grey
5000 violet blue

AM 500 FH classic 1 Art.-no. 210.110



The classic with the board area of use.

The work top of high-quality beech multiplex material offers space even for larger parts and the tools needed for work.



The high-quality bonded panel of beech wood (Multiplex) has a resilient surface that can be cleaned easily.

The work top is screwed to the base frame of the SUPPORTER and can be exchanged on demand.

Accessories on pages 14 - 23



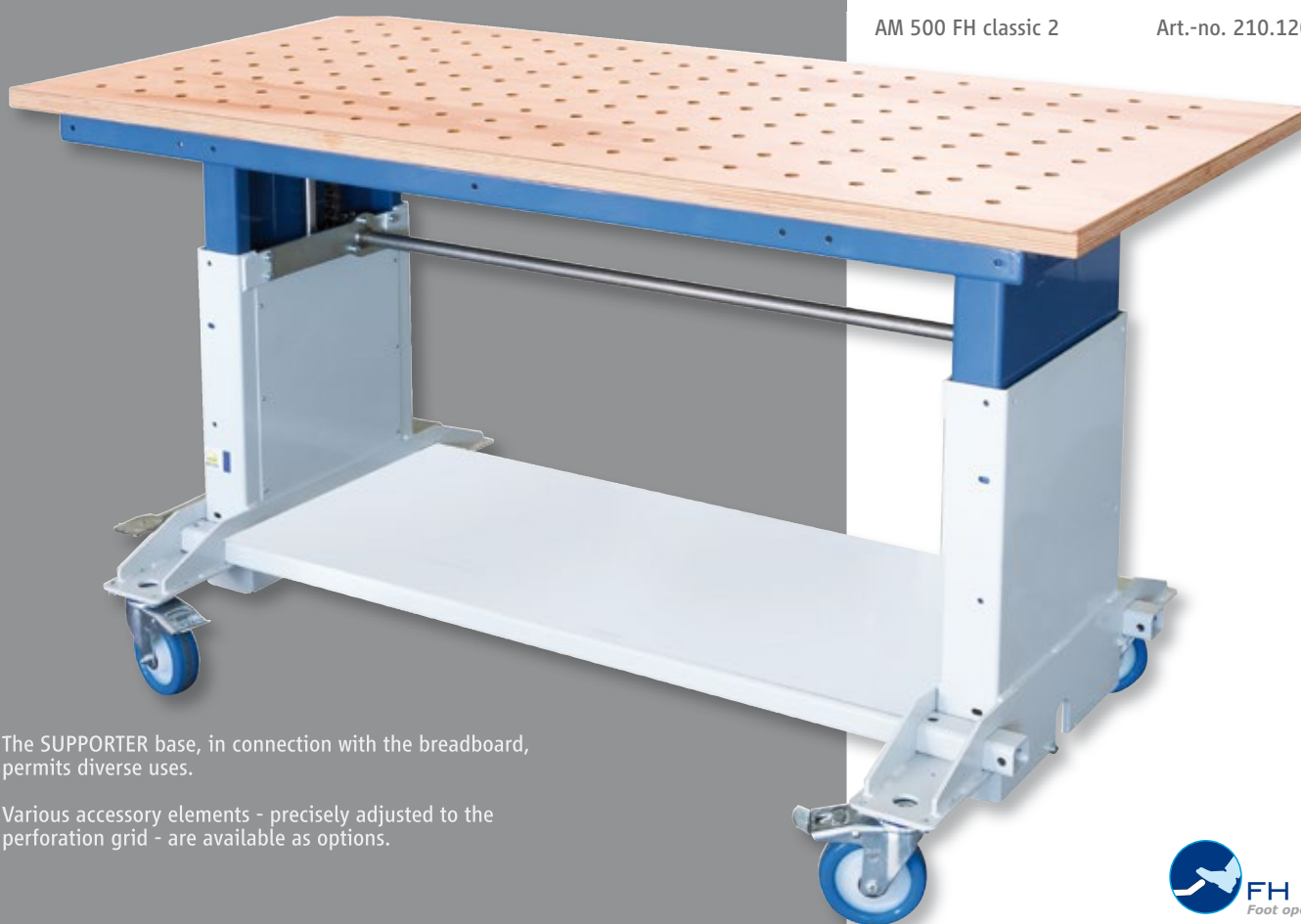
SUPPORTER AM 500 FH classic 2

with hydraulic foot operation

- Base frame 1,600 x 790 mm
- Load capacity 500 kg
- Min. height/overall height 700 mm
- Max. height 1,000 mm
- Effective stroke 300 mm
- Weight 140 kg
- Powder coated RAL 7035 light grey
5000 violet blue

AM 500 FH classic 2

Art.-no. 210.120



The SUPPORTER base, in connection with the breadboard, permits diverse uses.

Various accessory elements - precisely adjusted to the perforation grid - are available as options.



With the breadboard work top made of beech multiplex, the SUPPORTER turns into a practical helper at workplaces where workpieces and objects must be fastened.

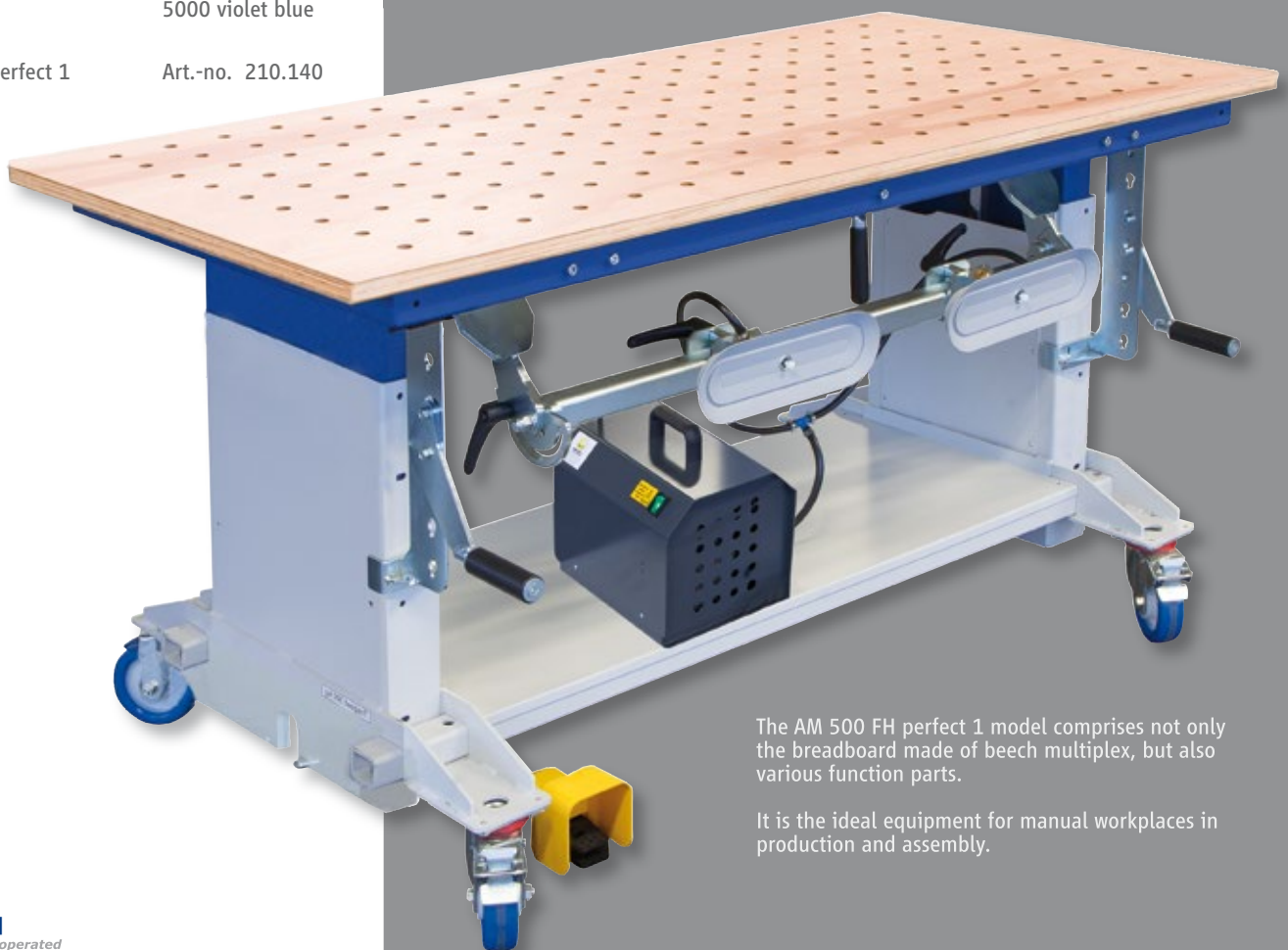
Accessories on pages 14 - 23

SUPPORTER AM 500 FH perfect 1

with hydraulic foot operation

- Base frame 1,600 x 790 mm
- Load capacity 500 kg
- Min. height/overall height 700 mm
- Max. height 1,000 mm
- Effective stroke 300 mm
- Weight 140 kg
- Powder coated RAL 7035 light grey
5000 violet blue

AM 500 FH perfect 1 Art.-no. 210.140



The AM 500 FH perfect 1 model comprises not only the breadboard made of beech multiplex, but also various function parts.

It is the ideal equipment for manual workplaces in production and assembly.

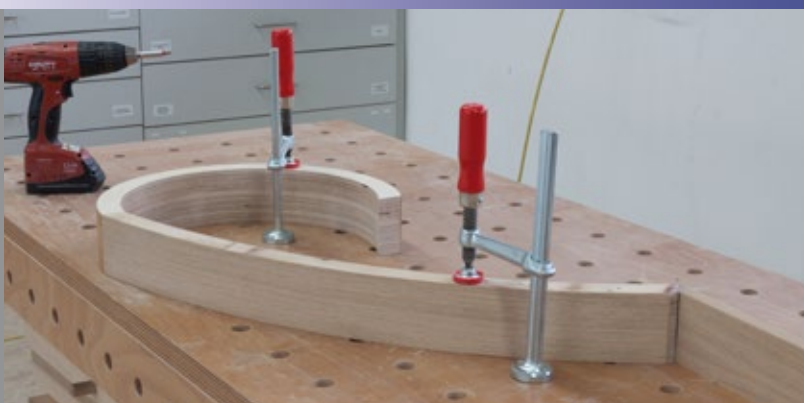


Equipment

- Breadboard in beech multiplex
Bore Ø 22 mm, grid 100 mm
- Steel sheet shelf board
- Vacuum clamping unit, folding, foot pedal,
2 oval suction grippers 300 x 100 mm
- Electrical vacuum pump, 3 m/h, 230 V
- Vertical supports, left and right, adjustable

Accessories on pages 14 - 23





The basis for quick, economically efficient and precise work.

With the breadboard as a basis and different clamping and fastening elements, even unusual workpieces can be created.

ErgoPlan EP

the workbench-SUPPORTER

- Base frame 1,700 x 640 mm
- Load capacity 500 kg
- Min. height/overall height 780 mm
- Max. height 1,080 mm
- Effective stroke 300 mm
- Weight 232 kg
- Powder coated RAL 9002 greywhite

EP 1 stationary

with a workbench plate and undercarriage
Art-no. 211.100

EP 2 stationary

with a workbench plate, without undercarriage
Art-no. 211.110

EP 3 stationary

without workbench plate,
without undercarriage
Art-no. 211.120



The right level of the work table is particularly important for young people.

Those learning to work at a table adjusted to their size and tasks during their training will make sure to treat their bodies with care throughout their working lives.



thinking along - growing along

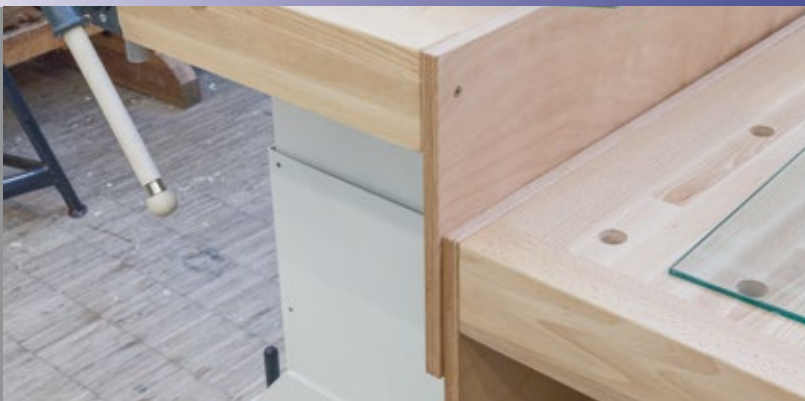
The workbench work top of the ErgoPlan can be adjusted to the desired level quickly and easily.

The practical foot pedal on the front takes care of lifting and lowering movements alike.

Actuation does not require a lot of strength. The table is moved gently at a constant speed.

Accessories on page 16





Function and work safety enjoy high priority in the ErgoPlan.

Like all the SUPPORTER models, the ErgoPlan has a mobile undercarriage. Four adjustable feet are activated before working and ensure a stable and secure stance.

Protective panels at the back of the workbench prevent catching of hands or fingers when lifting and lowering.

Accessories



Beech-multiplex worktop

- Format 1,600 x 790 mm
- 30 mm thick
- Resiliently coated with linseed oil
- For screwing on with platform basic frame

Art.-no. 210.300

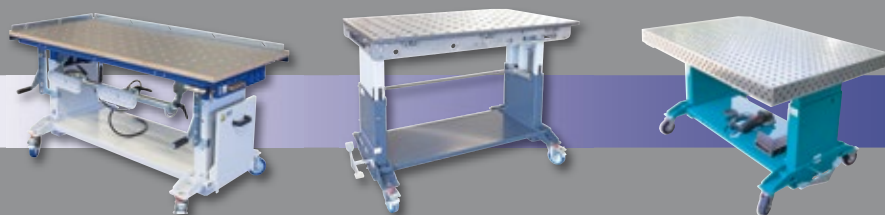


Breadboard beech-multiplex

- Format 1,600 x 790 mm
- 30 mm thick
- Hole grid 100 mm
- Bore 22 mm Ø
- Resiliently coated with linseed oil
- For screwing on with platform basic frame

Art.-no. 210.310





Breadboard HPL-coating



- Format 1,600 x 790 mm
- 30 mm thick
- Hole grid 100 mm
- Bore 22 mm Ø
- for screwing on with platform basic frame

Art.-no. 200.311

Side stop rail 90°



- Longitudinal side 1,550 mm long
- Narrow side 770 mm long
- 30 mm height adjustable
- Can be fastened
- Lowerable

Art.-no. 200.312

Accessories



Shelf board

The shelf board of stable steel sheet fits flush on the profiles between the side parts.

This creates a practical deposit for construction elements or tools under the work top.

Art.-no. 210.320



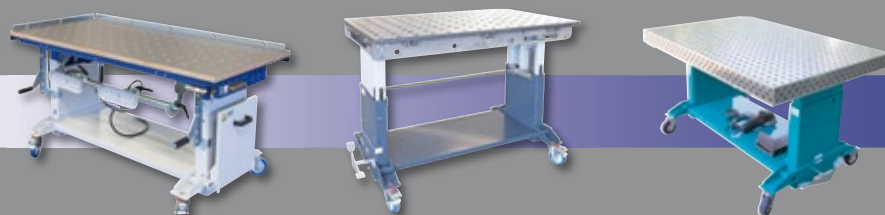
Fitted tool cabinet with 6 drawers

- Format 1,100 x 370 x 500 mm (l x h x d)
- 2 drawers 620 x 40 x 420 mm
- 2 drawers 360 x 40 x 420 mm
- 1 drawer 620 x 120 x 420
- 1 drawer 360 x 120 x 420

Art.-no. 210.620

Drawers of different sizes take up small parts or tools and keep them easily accessible.





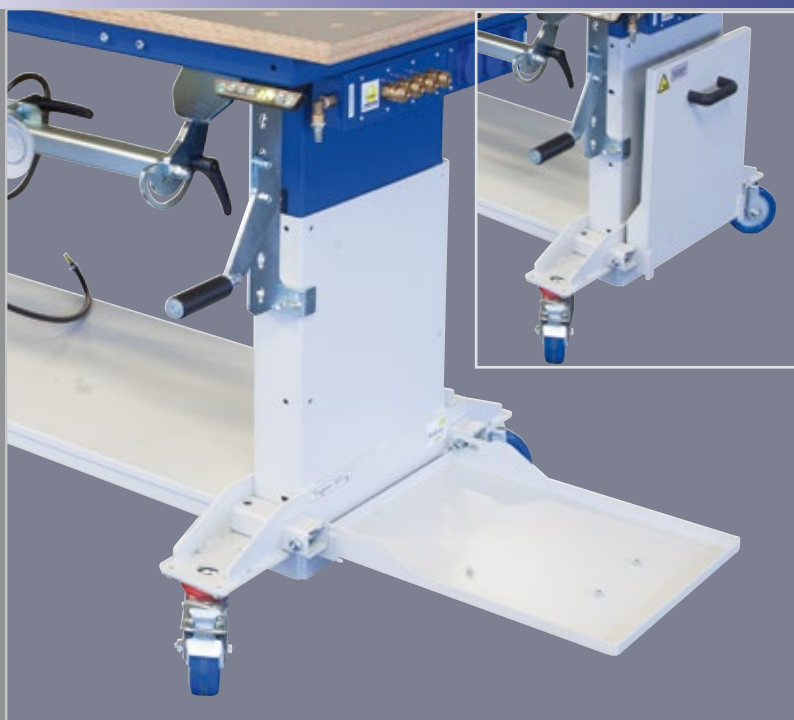
Deposit shelf can be folded

- Format 445 x 390 mm
- For screwing to the base frame

Art.-no. 210.321

Installed on the side of the SUPPORTER, the deposit shelf offers additional space for a vacuum box or other devices or tools.

When not in use, the board can be folded against the side part of the SUPPORTER to save space.



Power-strip

- Central compressed air and electrical connection
- 3 x 230 Volz Schuko outlets with cover
- 4 x compressed air quick couplings
- Supply lines 3,000 mm

Art.-no. 200.407



Accessories



Vacuum clamping unit

can be folded down

- 2 movable oval grippers 300 x 100 mm, with scanner valve
- Central foot switch
- Can smoothly swivel up to 90°, vertical to horizontal
- Can be folded under the work top when necessary

Art.-no. 210.340



Vertical support

left/right

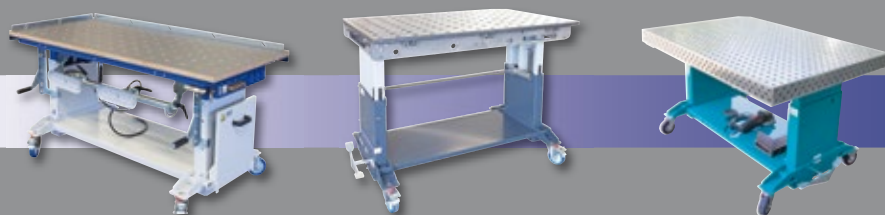
- Adjustable in the 50 mm keyhole grid

Art.-no. 210.330

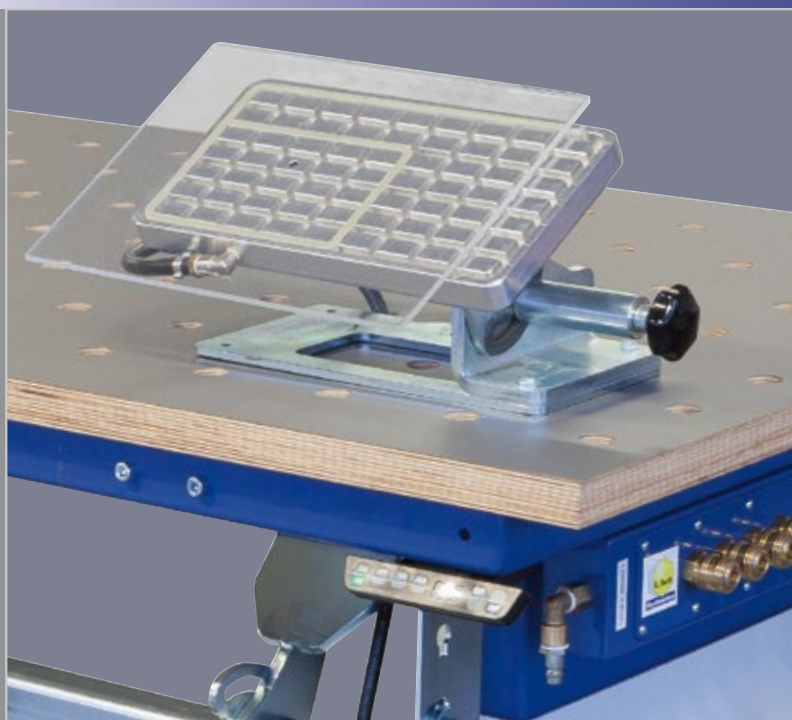
Panels that are processed standing vertically will be fitted securely on the vertical support.

The support pair is installed on the side parts of the SUPPORTER.





Vacuum clamping universal clamp for breadboard



- Format 290 x 160 mm
- 2 grid bolts with safety pin for insertion in breadboards
- Can smoothly swivel up to 90°, vertical to horizontal

Art.-no. 200.406

Vacuum box for mobile use



- 2 connection couplings for vacuum clamp
- Dry-running pump with constant performance
- Electrical connection 230 V

Vacuum box 3.0 m² Art.-no. 200.303-1-A

Vacuum box 4.6 m² Art.-no. 200.403-1-B

Foot pedal valve

- For clamping and releasing suction grippers

Art.-no. 200.403-1-C

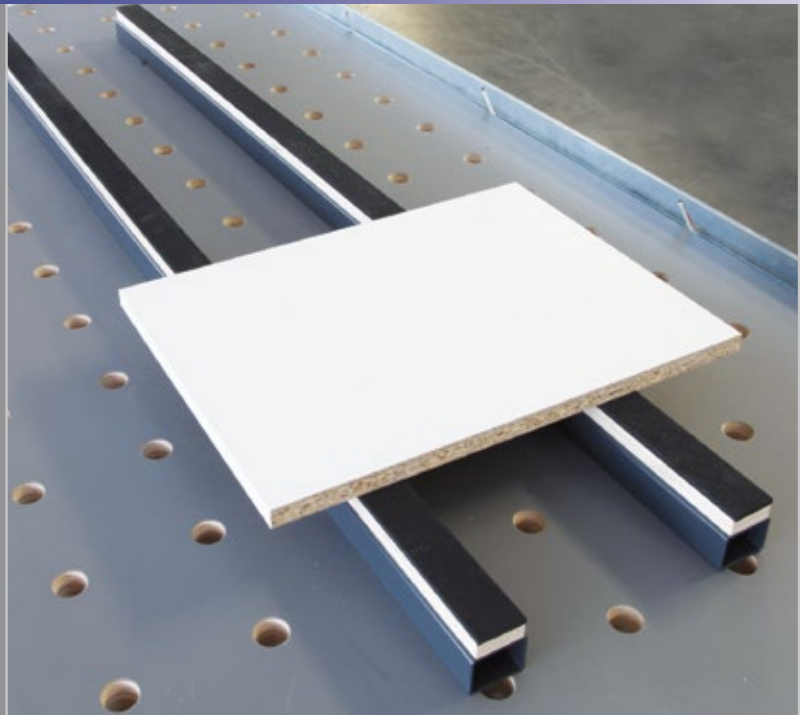
Accessories



Anti-slip support rail

- 1,200 mm long
- 2 grid bolts fitting breadboards
- Material-protecting rubber support

Art.-no. 200.610



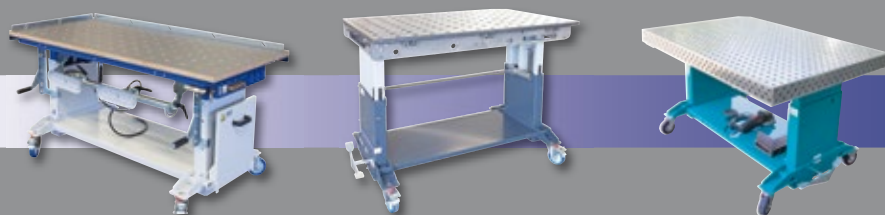
Spindle clamp

- With grid bolts fitting breadboards
- Pressure 5,000 N
- Pressing stroke 130 mm
- Pressure plate 100 x 70 mm

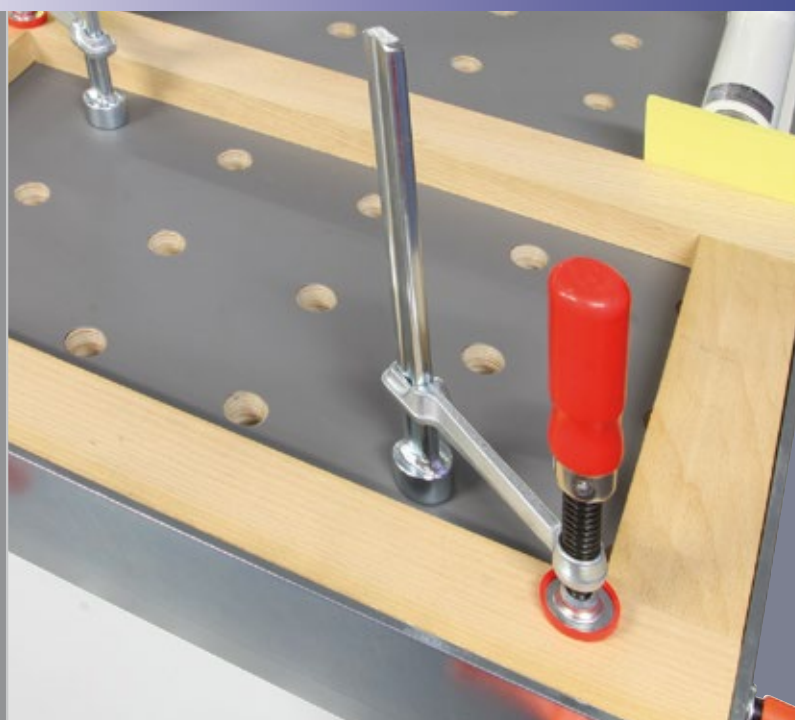
Art.-no. 200.608

The spindle spanner can be used to press strips, panels or comparable parts.





Clamp



- For workpiece fastening from above
- With threaded spindle
- Adjustable up to a workpiece thickness of 200 mm
- With grid bolts fitting breadboards

Art.-no. 200.603

Stop pin



- Pin Ø 40 mm
- Length 40 mm
- For breadboards
- Made of POM

Art.-no. 200.602

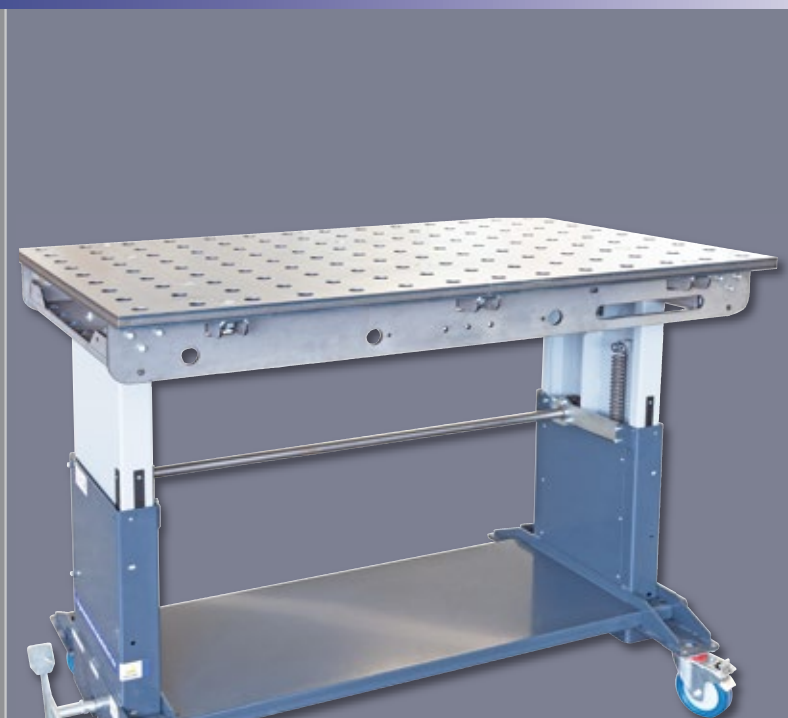
Accessories



3 D welder work top

- Format 1,400 x 900 mm
- 25 mm thick
- Hole grid 100 mm
- Bore 28 mm Ø
- 100 x 100 mm grid lines of workpieces and devices
- Weight approx. 170 kg
- Fully screwed on, which permits easy exchange

Art.-no. 210.650



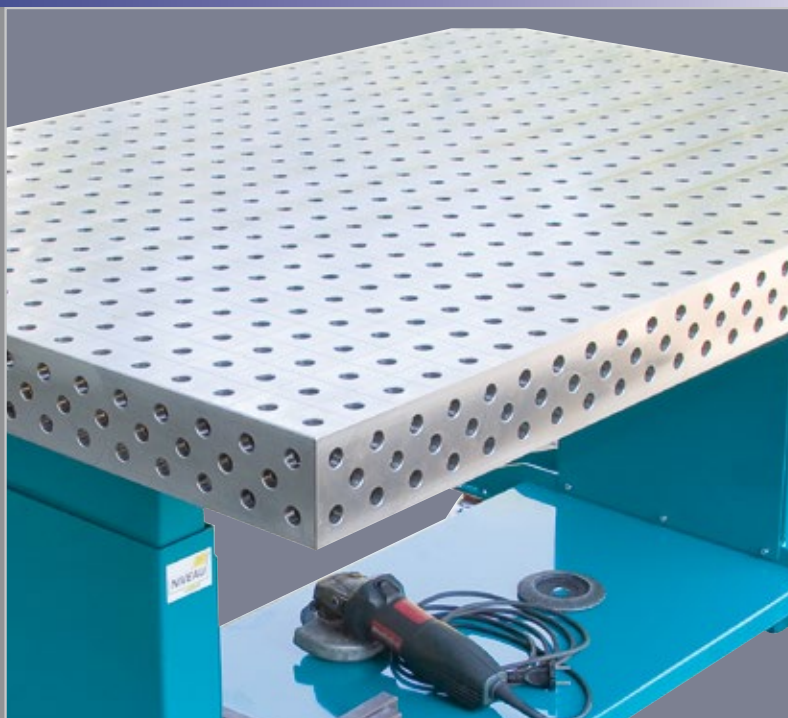
S 4 hole grid work and clamping table

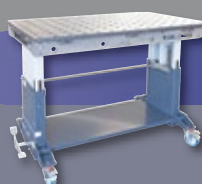
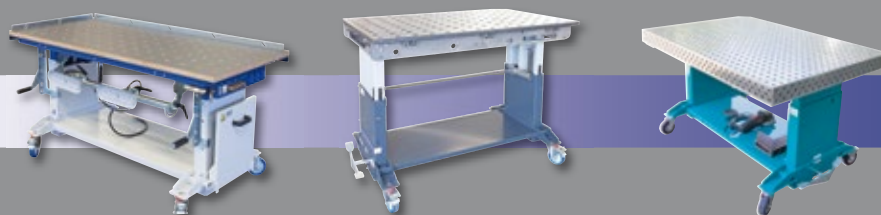
- 100 mm high
- 12 mm material thickness
- Table - vertical/horizontal bores 16 mm Ø
- Sides - diagonal bores 16 mm Ø
- Bore distance 50 mm
- Precision-cut
- Reinforced with welded-in ribs

Only for SUPPORTER AM 1200 FH

- Format 1,500 x 1,000 x 100 mm Art.-no. 210.600
- Weight approx. 280 kg

- Format 2,000 x 1,000 x 100 mm Art.-no. 210.610
- Weight approx. 350 kg





Clamping/fastening tools for welder work tops

Vice 180°

- With socket + spindle
- Smoothly adjustable

Art.-no. D28-6721

Stop and clamping angle 275 x 175 mm

Art.-no. D28-2800

Clamping bolt, short, with 5 balls

Art.-no. D28 - 5101-10

Universal stop, large

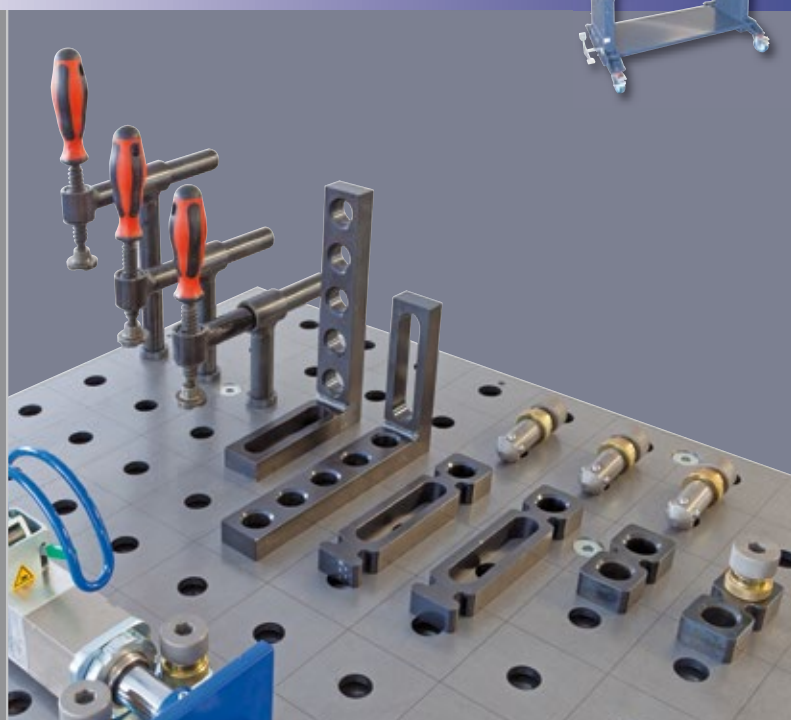
Art.-no. D28 -4100

Universal stop, small

Art.-no. D28 -4200

Ball socket wrench SW 14

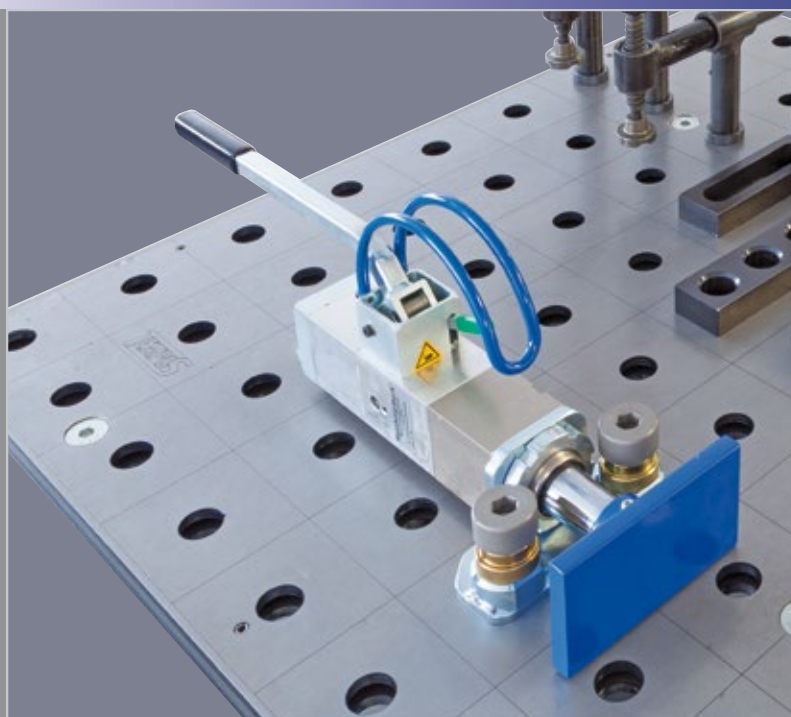
Art.-no. D 28-9250



Manual hydraulic press unit for welder work tops

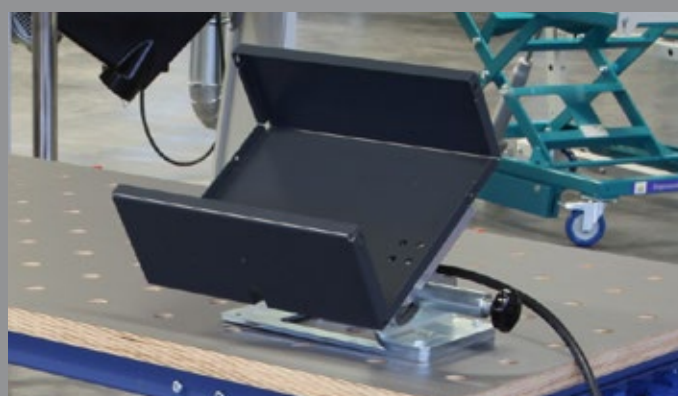
- 2 clamping bolts with grid rings for fastening on the work top
- Pressure 20,000 N
- Pressing stroke 60 mm
- Pressure plate 140 x 80 mm

Art.-no. B0-043D













**Visit our exhibition
in Sigmaringen.**

Come to Anton-Günther-Str. 3-7
to look at all the important lifting
tables and working tools on an
exhibition area of 600 sqm - and
try them out right away.

Experts for ergonomic work know
what they must observe and what
solutions are sensible for different
applications.
They will gladly give individual
advice.



Reinhold Beck
Maschinenbau GmbH
Im Grund 23
D-72505 Krauchenwies
Tel. +49 7576 962978-0
Fax +49 7576 962978-90
info@beck-maschinenbau.de
www.beck-maschinenbau.de



www.ergonomischer-arbeitstisch.de