

Art. 494

testa per tenonare

tenoning tools

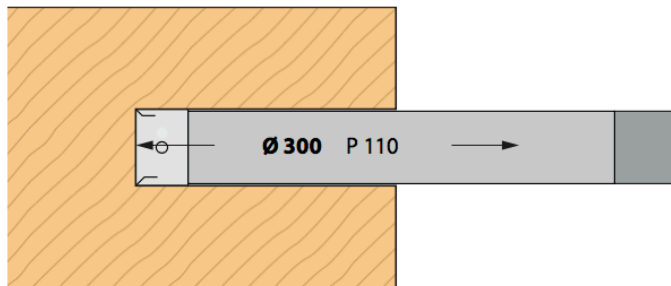
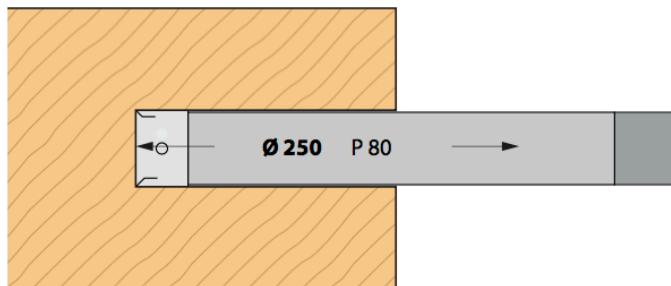
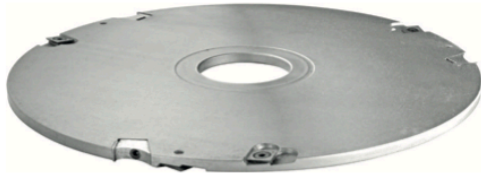
zapfen messerkopf

cabezales de espigado

p.o. à tenonner

фрезы для шипов

رؤوس للتسجين



| Cod. | ø D mm | B mm | ø d mm | P mm | Z | rpm min/max |
|--------|-----------|---------|-----------|---------|-------|----------------|
| 494 10 | 250 | 8 | 30 | 80 | 4 + 4 | 2700 - 4600 |
| 494 11 | 250 | 8 | 35 | 80 | 4 + 4 | 2700 - 4600 |
| 494 12 | 250 | 8 | 40 | 80 | 4 + 4 | 2700 - 4600 |
| 494 13 | 250 | 8 | 50 | 80 | 4 + 4 | 2700 - 4600 |
| 494 14 | 250 | 10 | 30 | 80 | 4 + 4 | 2700 - 4600 |
| 494 15 | 250 | 10 | 35 | 80 | 4 + 4 | 2700 - 4600 |
| 494 16 | 250 | 10 | 40 | 80 | 4 + 4 | 2700 - 4600 |
| 494 17 | 250 | 10 | 50 | 80 | 4 + 4 | 2700 - 4600 |
| 494 18 | 250 | 12 | 30 | 80 | 4 + 4 | 2700 - 4600 |
| 494 19 | 250 | 12 | 35 | 80 | 4 + 4 | 2700 - 4600 |
| 494 20 | 250 | 12 | 40 | 80 | 4 + 4 | 2700 - 4600 |
| 494 21 | 250 | 12 | 50 | 80 | 4 + 4 | 2700 - 4600 |
| 494 22 | 250 | 15 | 30 | 80 | 4 + 4 | 2700 - 4600 |
| 494 23 | 250 | 15 | 35 | 80 | 4 + 4 | 2700 - 4600 |
| 494 24 | 250 | 15 | 40 | 80 | 4 + 4 | 2700 - 4600 |
| 494 25 | 250 | 15 | 50 | 80 | 4 + 4 | 2700 - 4600 |
| 494 26 | 250 | 20 | 30 | 80 | 4 + 4 | 2700 - 4600 |
| 494 27 | 250 | 20 | 35 | 80 | 4 + 4 | 2700 - 4600 |
| 494 28 | 250 | 20 | 40 | 80 | 4 + 4 | 2700 - 4600 |
| 494 29 | 250 | 20 | 50 | 80 | 4 + 4 | 2700 - 4600 |
| 494 30 | 300 | 8 | 30 | 110 | 4 + 4 | 2700 - 4600 |
| 494 31 | 300 | 8 | 35 | 110 | 4 + 4 | 2700 - 4600 |
| 494 32 | 300 | 8 | 40 | 110 | 4 + 4 | 2700 - 4600 |
| 494 33 | 300 | 8 | 50 | 110 | 4 + 4 | 2700 - 4600 |
| 494 34 | 300 | 10 | 30 | 110 | 4 + 4 | 2700 - 4600 |
| 494 35 | 300 | 10 | 35 | 110 | 4 + 4 | 2700 - 4600 |
| 494 36 | 300 | 10 | 40 | 110 | 4 + 4 | 2700 - 4600 |
| 494 37 | 300 | 10 | 50 | 110 | 4 + 4 | 2700 - 4600 |
| 494 38 | 300 | 12 | 30 | 110 | 4 + 4 | 2700 - 4600 |
| 494 39 | 300 | 12 | 35 | 110 | 4 + 4 | 2700 - 4600 |
| 494 40 | 300 | 12 | 40 | 110 | 4 + 4 | 2700 - 4600 |
| 494 41 | 300 | 12 | 50 | 110 | 4 + 4 | 2700 - 4600 |
| 494 42 | 300 | 15 | 30 | 110 | 4 + 4 | 2700 - 4600 |
| 494 43 | 300 | 15 | 35 | 110 | 4 + 4 | 2700 - 4600 |
| 494 44 | 300 | 15 | 40 | 110 | 4 + 4 | 2700 - 4600 |
| 494 45 | 300 | 15 | 50 | 110 | 4 + 4 | 2700 - 4600 |
| 494 46 | 300 | 20 | 30 | 110 | 4 + 4 | 2700 - 4600 |
| 494 47 | 300 | 20 | 35 | 110 | 4 + 4 | 2700 - 4600 |
| 494 48 | 300 | 20 | 40 | 110 | 4 + 4 | 2700 - 4600 |
| 494 49 | 300 | 20 | 50 | 110 | 4 + 4 | 2700 - 4600 |

| Cod. | | Parti di ricambio Spare Parts | Dimensions mm |
|------------|--|----------------------------------|------------------|
| 907 10 | | Coltello / Knife | 7,6 x 12 x 1,5 |
| 907 11 | | Coltello / Knife | 9,6 x 12 x 1,5 |
| 907 12 | | Coltello / Knife | 11,6 x 12 x 1,5 |
| 907 14 | | Coltello / Knife | 15 x 12 x 1,5 |
| 907 15 | | Coltello / Knife | 20 x 12 x 1,5 |
| 943 10 | | Rasante / Spur | 14 x 14 x 2 |
| CU 7 | | Cuneo / Wedge | 7 |
| CU 9 | | Cuneo / Wedge | 9 |
| CU 11 | | Cuneo / Wedge | 11 |
| CU 14 | | Cuneo / Wedge | 14 |
| CU 19 | | Cuneo / Wedge | 19 |
| VT M5 x 7 | | Vite / Screw | M5 x 7 |
| VT M6 x 16 | | Vite / Screw | M6 x 16 |
| VT M8 x 16 | | Vite / Screw | M8 x 16 |
| CHT3 | | Chiave / Allen key | T3 |
| CHT4 | | Chiave / Allen key | T4 |