

VERSOFIX CUTTERS AND KNIVES

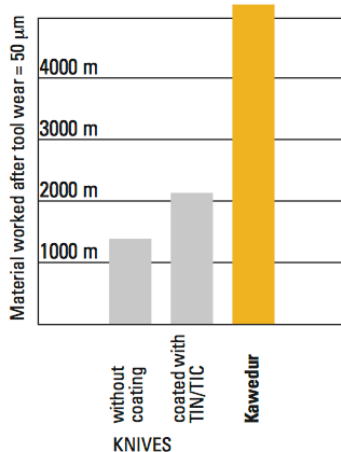
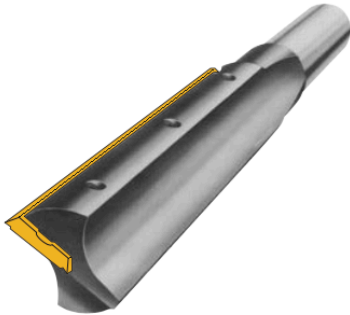
The best single flute replaceable tip straight cutters

The **VERSOFIX** tools and relating replaceable tips, due to their special design, give excellent result in high volume production and are suitable for use in all types of machines.

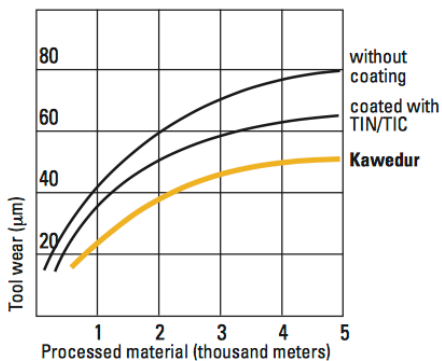
The insert knives are treated with a special coating ensuring the possibility to work also tough materials, i.e. laminated worktops or glass-reinforced plastic panels.

In the solid wood working there isn't any better solution when working with cutters with small shank diameter ($\varnothing 8, \varnothing 10, \varnothing 12$).

The "**Kawedur**" coating ensures a better chip flow and makes the life of the knives minimum twice longer than any other type of coating (TIN/TIC).



WORKING:
melamine coated chipboard

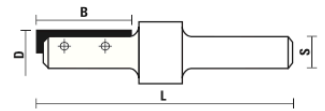


WORKING PARAMETERS:

RPM $n=18.000$
Cutting speed $vs=14,5$ m/sec
Feed speed $vf=6$ m/min

HW INSERT PLUNGE ROUTER BITS Z=1 "VERSOFIX"

ART. W120 - W121 - W122



This item is sold complete with a hex key

HW knives with "Kawedur" coating

S $\varnothing 8$	D	B	L
W122.080.R	8	20	63
W122.100.R	10	20	63
W122.120.R	12	20	63
W122.140.R	14	30	74
W122.150.R	15	30	74
W122.160.R	16	30	74
W122.180.R	18	30	74
W122.200.R	20	30	74
W122.220.R	22	30	74



Z052.101.N



Z052.102.N (For D=14÷22)



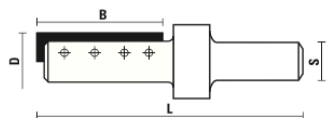
Z055.220.N (For D=8÷12)
Z055.221.N (For D=14÷22)
Z055.230.N (For D=12,2÷13,9)
Z055.231.N (For D=14÷22)
Z055.250.N (For D=14÷22)



Z051.102.R (For D=14÷22)

HW INSERT PLUNGE ROUTER BITS Z=1 "VERSOFIX"

ART. W123 - W124 - W125



This item is sold complete with a hex key

HW knives with "Kawedur" coating

S $\varnothing 10 \times 35$	S $\varnothing 12 \times 35$	D	B	L
W123.080.R	W124.080.R	8	20	68
W123.100.R	W124.100.R	10	20	68
W123.120.R	W124.120.R	12	20	68
	W124.140.R	14	30	74
W123.141.R	W124.141.R	14	50	94
	W124.150.R	15	30	74
	W124.160.R	16	30	74
W123.161.R	W124.161.R	16	50	94
	W124.180.R	18	30	74
W123.181.R	W124.181.R	18	50	94
	W124.200.R	20	30	74
W123.201.R	W124.201.R	20	50	94
	W124.220.R	22	30	74



Z052.101.N



Z052.102.N (For D=14÷22)



Z055.220.N (For D=8÷12)
Z055.221.N (For D=14÷22)
Z055.230.N (For D=12,2÷13,9)
Z055.231.N (For D=14÷22)
Z055.250.N (For D=14÷22)



Z051.102.R (For D=14÷22)