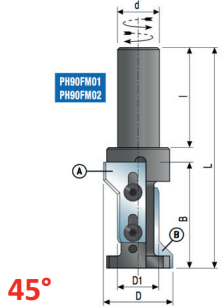


CNC



Multi-profile CNC

Voor diktes 39,5 tot 54 mm / Epaisseurs 39,5 – 54 mm

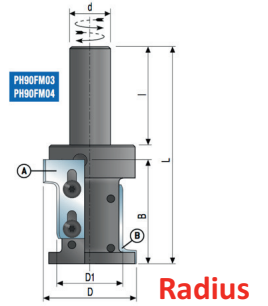
Uitvoering / Version 45°

D. 33,4 x 20 x B = 39,5 – 54 mm x 110 mm x S = 25 – PH90FM01

Uitvoering / Version Radius 2 – 3 – 5 mm

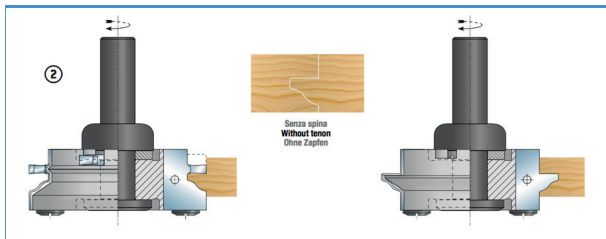
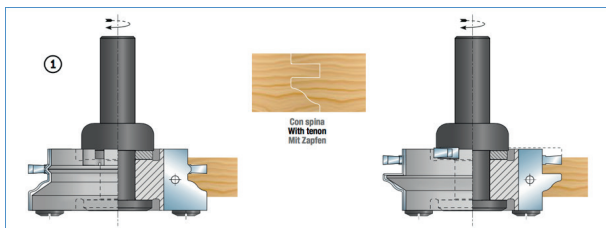
D. 48 x 35 x B = 39,5 – 54 mm x 110 mm x S = 25 – PH90FM03

45°



Radius

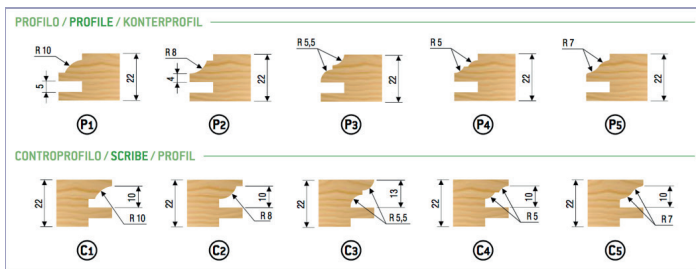
Profiel & conterprofiel keukendeuren Multi-profile CNC



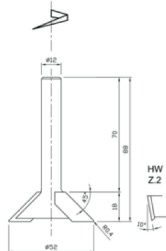
Type	Ø D [mm]	D1 [mm]	B [mm]	Ø Ø d [mm]	Z	l	Art. Nr.	€
(A)	102	80	35	20 / 25	2	2+2	PH93FM01	
(B)	102	80	35	20 / 25	2	2+2	PH93FM02	

Fresa compresa di coltelli. In fase d'ordine specificare il profilo richiesto.
Router already equipped with profiled knives. When ordering please specify the profile required.
Profilmesser im Lieferumfang enthalten. Bitte das benötigte Profil bei Bestellung angeben.

RICAMBI / SPARE PARTS / ERSATZTEILE				
Art.	Dimensioni Dimensions Abmessungen [mm]	Art. Nr. PH93FM		€
		01	02	
Insero per incastri / Grooving insert / Nutmesser	34x16x5	2	2	
Insero per incastri / Grooving insert / Nutmesser	34x16x6	2	2	
Cuneo / Wedge / Spannkeil	35x20x8	2	/	
Cuneo / Wedge / Spannkeil	35x20x8	/	2	
Vite per cuneo / Wedge's screw / Spannkeil Schraube	M8x16	4	4	
Vite di riferimento / Positioning screw / Schraube für VS	M5x7 Ø16	2	2	
Vite per inserto / Insert's screw / Schraube für nutmesser	M5x10	4	4	
Chiave per cuneo / Wedge's key / Torxschlüssel	Esagonale 4	1	1	
Chiave per inserto / Insert's key / Torxschlüssel	Esagonale 3	1	1	



COLTELLI STANDARD / STANDARD KNIVES / STANDARD MESSER					
Type	Art.	Dimensioni Dimensions Abmessungen [mm]	Art. Nr. PH93FM		€
			01	02	
(P1)	Coltello / Knife / Messer	35x30x3	2	/	
(P2)	Coltello / Knife / Messer	35x30x3	2	/	
(P3)	Coltello / Knife / Messer	35x30x3	2	/	
(P4)	Coltello / Knife / Messer	35x30x3	2	/	
(P5)	Coltello / Knife / Messer	35x30x3	2	/	
(C1)	Controprofilo / Counterprofile / Konterprofilmesser	35x30x3	/	2	
(C2)	Controprofilo / Counterprofile / Konterprofilmesser	35x30x3	/	2	
(C3)	Controprofilo / Counterprofile / Konterprofilmesser	35x30x3	/	2	
(C4)	Controprofilo / Counterprofile / Konterprofilmesser	35x30x3	/	2	
(C5)	Controprofilo / Counterprofile / Konterprofilmesser	35x30x3	/	2	

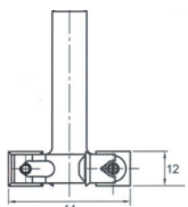
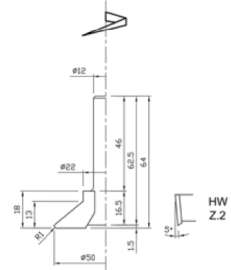


HM handgrefrees / Fraise pour poignées

Widia / Carbure

D. 50 x 18 x S = 12 mm - Art. 11071

D. 52 x 18 x S = 12 mm - Art. 6544



WPL scharnierfrees NOHA system / Fraise pour charnières NOHA

Avec couteaux – S = 10 mm

D. 44 x 12 x 62 x S = 10 mm - Art. NOHA44